

gsh/psh/gsh741

24 April 2008

The Manager - Company Announcements Office
Australian Securities Exchange Limited
Level 4
20 Bridge Street
SYDNEY NSW 2000

Via ASX Online

Number of pages – 3

Dear Sir,

Commencement of drilling program – Mary Kathleen, Queensland

Attached for release to the market is an announcement advising of the commencement of a reverse circulation drilling program at the Company's Mary Kathleen Project in Queensland.

For and on behalf of the directors of
Goldsearch Limited



P S Hewson
Secretary

ANNOUNCEMENT

24 April 2008

DRILLING COMMENCES AT MARY KATHLEEN PROJECT, QLD

Goldsearch commences RC drilling of high priority targets.

Goldsearch Limited (ASX: GSE) is pleased to announce that it has commenced a 3000 metre Reverse Circulation (RC) drilling program to test four high priority targets at the Mary Kathleen Project in the Mount Isa / Cloncurry region in north west Queensland.

The drilling program is expected to take two to three weeks to complete with final assaying expected within the June 2008 quarter.

Goldsearch director Mr John Percival commented, "We are pleased to be drilling at Mary Kathleen, given the encouraging signs from previous surface and geophysical work completed over the last twelve months whilst all relevant approvals were put in place. We believe there may be potential for the discovery of significant deposits of copper/gold and for additional high grade uranium at the nearby Elaine Dorothy prospect."

The Mary Kathleen Project is located 40 kilometres east of the town of Mount Isa. The project area covers numerous areas of historical oxide copper production. The Pindora target is located five kilometres east of Kings Minerals' Kalman Deposit (copper, gold, molybdenum). The Elaine Dorothy uranium prospect is located seven kilometres south of the former Mary Kathleen Mine, Australia's first uranium mine.

At the Pindora, Prince of Wales and Hardway targets, drilling is targeted on geochemical, magnetic and induced polarisation (IP) geophysical anomalies adjacent to major fault structures. At Elaine Dorothy, drilling will initially test the potential of previously drill identified mineralisation at depth with further drilling to be completed if on-site scintillometer tests are positive.

Mary Kathleen represents Goldsearch's second project to commence a drilling program this year, with drilling already underway at the company's 100%-owned Mt Wellington Gold project in Victoria.

For further information contact:

Mr John Percival
Executive Director – Operations
Tel: 02 9241 5999

or visit the website at www.goldsearch.com.au

ANNOUNCEMENT

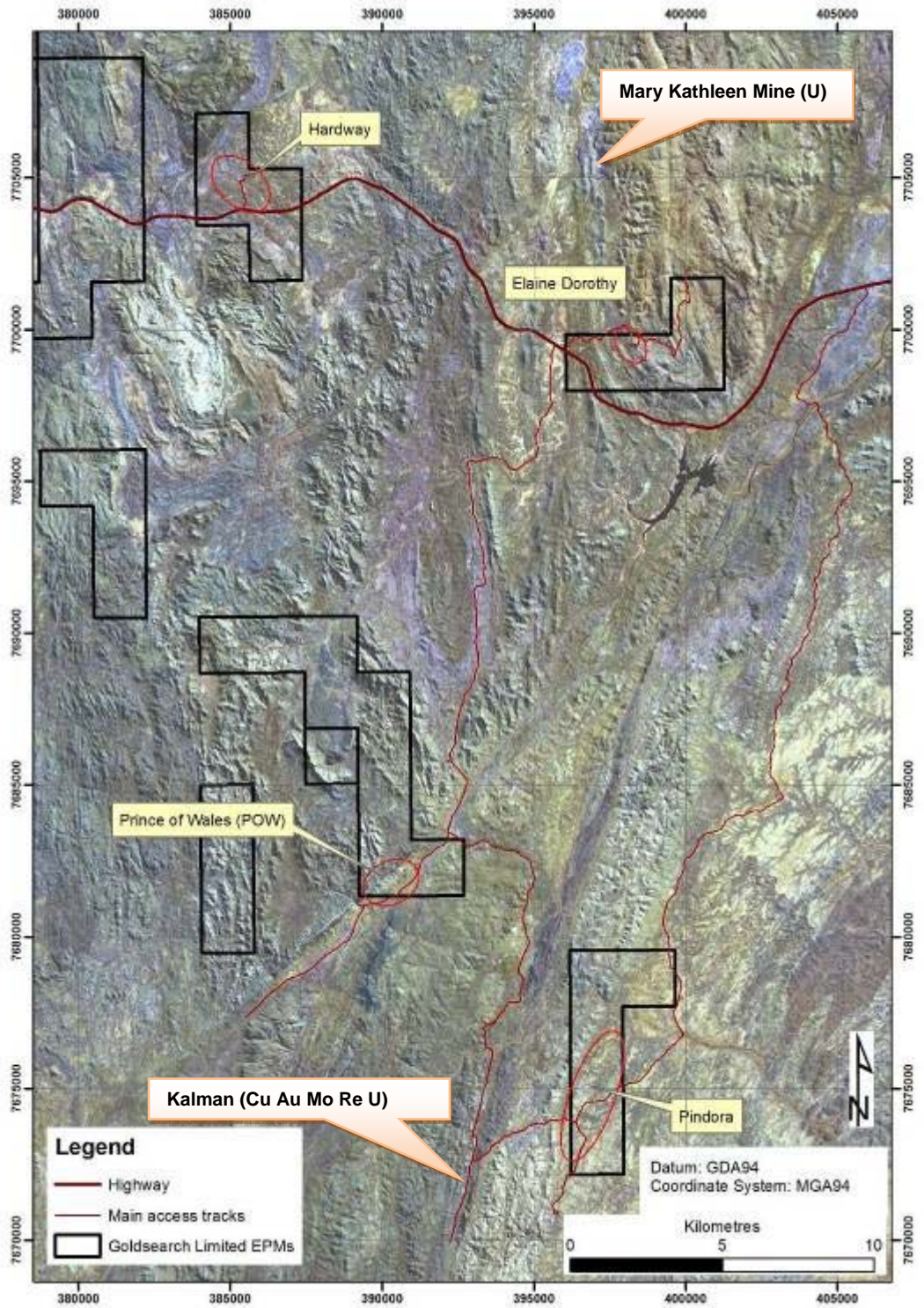


Figure 1. Mary Kathleen Project - Target areas.